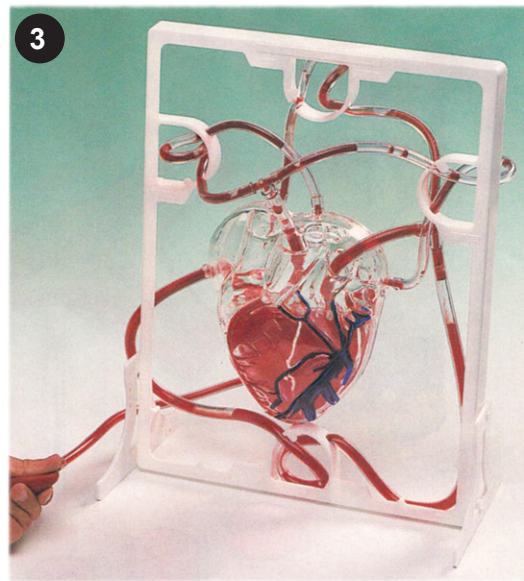
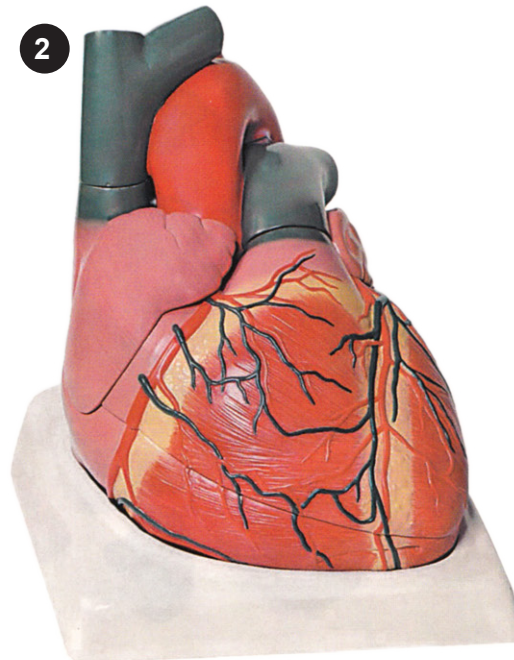
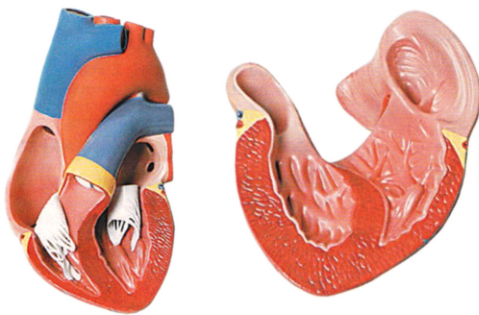
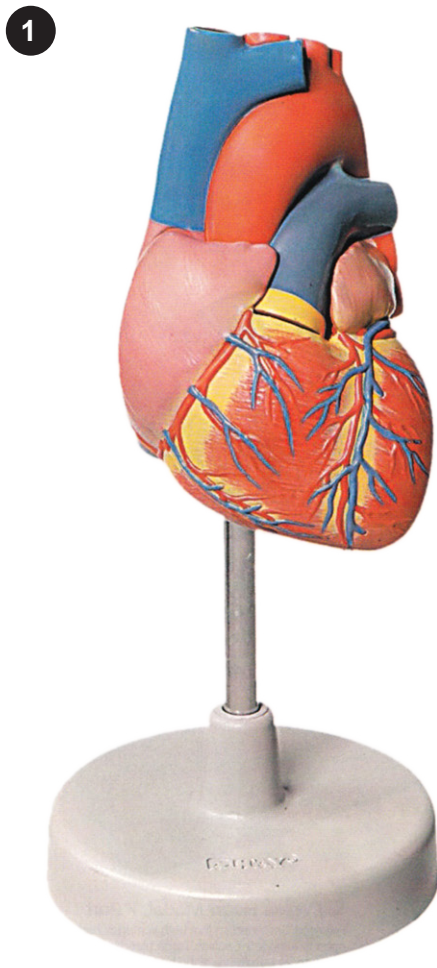


BIOLOGI KEMI FYSIK



1. Human Heart 2 Part

Life size in two parts. The anterior heart wall can be removed to show the left and right ventricles and atria as well as the tricuspid, pulmonary, mitral and aortic valves.

Mounted with stand. Size: 110 x 75 x 95mm. Weight: 230g.

E8R02043st 396 kr

2. Heart Model - 3X

This 4-port model is 3x life size. Sectioned along the anterior plane to show the cardiac valves and allow comparison of the right and left ventricles. The right atrium is also removable.

Mounted size: 240 x 250 x 280mm. Weight: approx. 2.9kg

E8R02005st 2496 kr

3. 3D Pumping Heart

A three dimensional operating plastic heart with transparent chambers. Complete with assembly instructions and acrylic point.

Size: 250mm high.

E8H34974st 132 kr

Ytterligare 589 sidor med material hittar du på vår hemsida
Findel Education - Digital Catalogues - Science
 eller i katalogen **Science** som beställs från Utbildningsbyrån på ub@nub.se